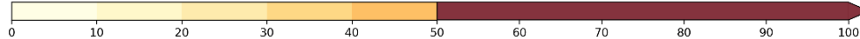


Priemerné denné koncentrácie znečisťujúcich látok v októbri 2023

Priemerné denné koncentrácie PM₁₀

| | Deň v mesiaci | | | | | | | | | | | | | | | | | | | | | | | | | | | | | | | | |
|----------------------------------|---------------|----|----|----|----|----|----|----|----|----|----|----|----|----|----|----|----|----|----|----|----|----|----|----|----|----|----|----|----|----|----|----|----|
| | 1 | 2 | 3 | 4 | 5 | 6 | 7 | 8 | 9 | 10 | 11 | 12 | 13 | 14 | 15 | 16 | 17 | 18 | 19 | 20 | 21 | 22 | 23 | 24 | 25 | 26 | 27 | 28 | 29 | 30 | 31 | | |
| Bratislava, Jeséniova | 13 | 20 | 24 | 8 | 18 | 15 | 21 | 11 | 13 | 25 | 27 | 31 | 29 | 30 | 9 | 6 | 14 | 26 | 35 | 38 | 18 | 7 | 13 | 19 | 9 | 12 | 7 | 7 | 13 | 14 | 9 | | |
| Bratislava, Kamenné nám. | 14 | 22 | 25 | 8 | 16 | 17 | 18 | 8 | 11 | 23 | 32 | 34 | 30 | 26 | 7 | 6 | 14 | 22 | 30 | 35 | 16 | 8 | 14 | 16 | 9 | 14 | 9 | 9 | 13 | 14 | 7 | | |
| Bratislava, Mamateyova | 11 | 16 | 19 | 9 | 14 | 14 | 13 | 7 | 9 | 17 | 23 | 25 | 23 | 21 | 5 | 7 | 11 | 16 | 30 | 28 | 10 | 3 | 12 | 14 | 7 | 12 | 6 | 5 | 9 | 8 | 4 | | |
| Bratislava, Púchovská | 15 | 25 | 27 | 13 | 20 | 17 | 22 | 12 | 11 | 23 | 33 | 34 | 34 | 27 | 8 | 8 | 18 | 23 | 31 | 44 | 20 | 8 | 15 | 18 | 9 | 12 | 7 | 9 | 15 | 17 | 8 | | |
| Bratislava, Trnavské Mýto | 16 | 29 | 30 | 18 | 27 | 29 | 24 | 15 | 9 | 19 | 25 | 29 | 28 | 21 | 5 | 8 | 14 | 18 | 24 | 30 | 14 | 7 | 14 | 15 | 8 | 12 | 7 | 8 | 10 | 12 | 7 | | |
| Pezinok, Obrancov mieru | 10 | 16 | 23 | 7 | 12 | 11 | 16 | 8 | 8 | 21 | 26 | 28 | 27 | 26 | 6 | 3 | 12 | 20 | 28 | 35 | 18 | 8 | 12 | 15 | 8 | 13 | 7 | 9 | 14 | 14 | 8 | | |
| Rohožník, Senická cesta | 11 | 18 | 22 | 10 | 14 | 15 | 18 | 11 | 13 | 15 | 26 | 26 | 26 | 25 | 9 | 10 | 15 | 20 | 33 | 31 | 17 | 8 | 13 | 17 | 9 | 9 | 8 | 10 | 13 | 14 | 8 | | |
| Rovinka | 12 | 18 | 18 | 12 | 14 | 17 | 18 | 9 | 10 | 16 | 17 | 23 | 22 | 21 | 7 | 8 | 14 | 20 | 31 | 42 | 12 | 4 | 11 | 14 | 8 | 12 | 6 | 6 | | | 11 | | |
| Senec, Boldocká | 12 | 20 | 35 | 8 | 15 | 17 | 18 | 9 | 10 | 23 | 27 | 36 | 38 | 26 | 6 | 8 | 17 | 21 | 30 | 38 | 16 | 9 | 16 | 17 | 32 | 15 | 6 | 9 | 12 | 14 | 11 | | |
| Senica, Hviezdoslavova | 12 | 19 | 22 | 8 | 17 | 16 | 17 | 10 | 12 | 22 | 29 | 33 | 32 | 28 | 7 | 9 | 15 | 22 | 29 | 36 | 21 | 10 | 13 | 16 | 14 | 13 | 9 | 10 | 11 | 15 | 14 | | |
| Sereď, Vínárska | 13 | 18 | 21 | 10 | 18 | 18 | 17 | 9 | 9 | 22 | 27 | 33 | 35 | 27 | 6 | 10 | 14 | 16 | 24 | 38 | 17 | 8 | 12 | 12 | 9 | 12 | 5 | 6 | 8 | 11 | 10 | | |
| Topoľníky, Aszód, EMEP | 8 | 10 | 14 | 7 | 11 | 9 | 12 | 7 | 5 | 14 | 17 | 23 | 22 | 21 | 6 | 3 | 7 | 14 | 23 | 27 | 13 | 6 | 6 | 11 | 6 | 7 | 4 | 4 | 6 | 8 | 7 | | |
| Trnava, Kollárova | 14 | 23 | 27 | 13 | 18 | 21 | 20 | 11 | 11 | 26 | 30 | 38 | 39 | 30 | 7 | 9 | 17 | 23 | 28 | 38 | 18 | 11 | 16 | 18 | 10 | 15 | 7 | 9 | 11 | 17 | 12 | | |
| Komárno, Vnútorňa Okružná | 12 | 19 | 20 | 11 | 14 | 18 | 14 | 10 | 11 | 21 | 25 | 36 | 31 | 29 | 5 | 7 | 11 | 20 | 27 | 35 | 18 | 5 | 10 | 15 | 8 | 13 | 4 | 9 | 7 | 10 | 9 | | |
| Nitra, Janíkovce | 10 | 15 | 19 | 12 | 16 | 13 | 15 | 8 | 9 | 19 | 24 | 29 | 33 | 28 | 8 | 8 | 13 | 16 | 27 | 34 | 17 | 7 | 11 | 13 | 12 | 9 | 6 | 8 | 8 | 9 | 11 | | |
| Nitra, Štúrova | 15 | 24 | 27 | 16 | 25 | 23 | 24 | 18 | 17 | 30 | 38 | 45 | 45 | 40 | 14 | 18 | 23 | 29 | 31 | 45 | 27 | 15 | 21 | 22 | 16 | 20 | 8 | 13 | 14 | 19 | 15 | | |
| Plášťovce | 5 | 8 | 11 | 7 | 8 | 9 | 11 | 8 | 7 | 13 | 17 | 20 | 17 | 18 | 8 | 9 | 13 | 17 | 15 | 25 | 13 | 11 | 16 | 15 | 10 | 17 | 7 | 15 | 13 | 17 | 9 | | |
| Bystričany, Rozvodňa SSE | 12 | 14 | 16 | 8 | 14 | 15 | 16 | 6 | 11 | 16 | 26 | 26 | 27 | 25 | 7 | 8 | 13 | 14 | 17 | 30 | 17 | 7 | 9 | 16 | 10 | 10 | 7 | 9 | 10 | 10 | 10 | | |
| Handlová, Morovianska cesta | 9 | 11 | 13 | 7 | 12 | 11 | 12 | 7 | 7 | 18 | 19 | 27 | 21 | 24 | 10 | 12 | 14 | 13 | 13 | 29 | 20 | 11 | 12 | 11 | 8 | 10 | 5 | 12 | 11 | 12 | 11 | | |
| Prievidza, Malonec-palská | 11 | 13 | 14 | 7 | 13 | 12 | 15 | 9 | 8 | 18 | 30 | 28 | 24 | 25 | 10 | 11 | 10 | 14 | 13 | 32 | 18 | 8 | 8 | 11 | 11 | 14 | 7 | 12 | 11 | 12 | 17 | | |
| Púchov, 1.mája | 12 | 14 | 15 | 6 | 11 | 21 | 11 | 7 | 6 | 14 | 21 | 20 | 29 | 29 | 12 | 15 | 18 | 24 | 26 | 38 | 24 | 11 | 11 | 20 | 15 | 15 | 12 | 14 | 20 | | | | |
| Trenčín, Hasičská | 16 | 20 | 22 | 10 | 19 | 20 | 18 | 9 | 13 | 21 | 33 | 38 | 35 | 33 | 9 | 13 | 20 | 23 | 26 | 36 | 21 | 11 | 16 | 20 | 15 | 18 | 11 | 13 | 13 | 16 | 15 | | |
| Banská Bystrica, Zelená | 9 | 12 | 12 | 7 | 10 | 10 | 13 | | 10 | 14 | 22 | 24 | 20 | 21 | 7 | 7 | 10 | 12 | 15 | 22 | 18 | 7 | 8 | 15 | 9 | 12 | 6 | 7 | 14 | 15 | 11 | | |
| Banská Bystrica, Štefánik. nám. | 12 | 22 | 20 | 10 | 22 | 22 | 19 | 9 | 14 | 24 | 41 | 35 | 33 | 26 | 10 | 16 | 26 | 31 | 24 | 42 | 21 | 12 | 15 | 24 | 15 | 18 | 10 | 15 | 21 | 39 | 17 | | |
| Hnúšťa, Hlavná | 11 | 14 | 19 | 9 | 11 | 12 | 13 | 8 | 11 | 12 | 21 | 25 | 22 | 24 | 9 | 9 | 9 | 11 | 15 | 22 | 20 | 10 | 8 | 17 | 12 | 16 | 9 | 12 | 15 | 21 | 19 | | |
| Jeľšava, Jesenského | 15 | 18 | 20 | 16 | 19 | 19 | 19 | 21 | | | 41 | 36 | 35 | 37 | 20 | 22 | 23 | 30 | 38 | 54 | 41 | 17 | 23 | 33 | 24 | 24 | 23 | 19 | 38 | 44 | 36 | | |
| Lučenec, Gemerská cesta | 12 | 17 | 21 | 14 | 17 | 19 | 18 | 11 | 15 | 22 | 40 | 29 | 36 | 31 | 11 | 13 | 20 | 26 | 17 | 31 | 24 | 11 | 17 | 22 | 12 | 17 | 10 | 10 | 16 | 27 | 20 | | |
| Zvolen, J. Alexyho | 10 | 14 | 18 | 7 | 11 | 13 | 16 | 9 | 13 | 23 | 27 | 27 | 25 | 25 | 9 | 7 | 16 | 20 | 16 | 31 | 20 | 10 | 15 | 17 | 12 | 16 | 8 | 11 | 20 | 22 | 16 | | |
| Žarnovica, Dolná | 13 | 15 | 18 | 10 | 17 | 13 | 16 | 13 | 9 | 20 | | | | | | | | | | | | | | | | | | | | | | | |
| Žiar nad Hronom, Jilemnického | 11 | 12 | 15 | 7 | 9 | 12 | 11 | 8 | 7 | 13 | 20 | 22 | 24 | 22 | 6 | 9 | 11 | | | | 28 | 19 | 5 | 10 | 17 | 14 | 15 | 6 | 8 | 12 | 14 | 13 | |
| Liptovský Mikuláš, Školská | 12 | 17 | 15 | 9 | 16 | 13 | 14 | 7 | 10 | 9 | 20 | 27 | 18 | 19 | 7 | 7 | 17 | 18 | 18 | 23 | 18 | 8 | 11 | 20 | 11 | 13 | 7 | 8 | 10 | 13 | 11 | | |
| Martín, Jesenského | 20 | 21 | 21 | 15 | 19 | 20 | 20 | 11 | 11 | 21 | 26 | 29 | 25 | 20 | 8 | 12 | 21 | 20 | 25 | 29 | 20 | 8 | 14 | | | 14 | 9 | 6 | 12 | 14 | 11 | | |
| Oščadnica | 11 | 11 | 13 | 7 | 13 | 18 | 16 | 9 | 11 | 13 | 23 | 26 | 26 | 20 | 11 | 20 | 16 | 16 | 21 | 27 | 22 | 12 | 10 | 14 | 16 | 15 | 10 | 14 | 9 | 12 | 11 | | |
| Ružomberok, Riadok | 10 | 12 | 13 | | | 17 | 17 | 7 | 11 | 12 | | | | | 22 | 21 | 9 | 12 | 20 | 21 | 20 | 27 | | | 16 | 22 | 15 | 17 | 11 | 8 | 13 | 15 | 12 |
| Žilina, Obežná | 12 | 16 | 19 | 10 | 15 | 20 | 15 | 8 | 12 | 21 | 27 | 28 | 27 | 20 | 7 | 13 | 19 | 26 | 24 | 31 | 19 | 8 | 15 | 22 | 13 | 11 | 9 | 8 | 13 | 15 | 10 | | |
| Košice, Amurská | 14 | 25 | 30 | 14 | 19 | 24 | 22 | 9 | 15 | 18 | 28 | 34 | 33 | 43 | 11 | 12 | 13 | 25 | 25 | 33 | 32 | 14 | 20 | 24 | 21 | 17 | 9 | 9 | 25 | 26 | 22 | | |
| Košice, Štefánikova | 14 | 23 | 29 | 17 | 17 | 20 | 18 | 8 | 12 | 21 | 30 | 37 | 40 | 44 | 10 | 15 | 14 | 26 | 23 | 45 | 38 | 15 | 23 | 27 | 23 | 17 | 13 | 9 | 23 | 31 | 25 | | |
| Veľká Ida, Letná | 27 | 25 | 28 | 30 | 23 | 26 | 15 | 34 | 14 | 28 | 27 | 38 | 55 | 47 | 29 | 20 | 32 | 39 | 23 | 34 | 30 | 12 | 26 | 25 | 21 | 12 | 8 | 9 | 17 | 22 | 18 | | |
| Kropachy, SNP | 13 | 18 | 21 | 17 | 21 | 19 | 20 | 8 | 15 | 19 | 29 | 36 | 31 | 28 | 10 | 18 | 17 | 19 | 25 | 36 | 25 | 15 | 16 | 22 | 17 | 15 | 12 | 12 | 17 | 22 | | | |
| Strážske, Mierová | 13 | 16 | 22 | 14 | 13 | 14 | 18 | 8 | 10 | 10 | 19 | 22 | 25 | 38 | 8 | 8 | 14 | 16 | 18 | 24 | 27 | 16 | 14 | 20 | 23 | 15 | 9 | 8 | 17 | 15 | 15 | | |
| Trebišov, T. G. Masaryka | 13 | 20 | 25 | 16 | 14 | 23 | 17 | 7 | 9 | 13 | 22 | 29 | 35 | 40 | 9 | 10 | 13 | 21 | 22 | 33 | 29 | 13 | 18 | 21 | 25 | 15 | 10 | 6 | 14 | 19 | 21 | | |
| Bardejov, Pod Vinbargom | 11 | 15 | 18 | 10 | 11 | 13 | 14 | 5 | 6 | 9 | 19 | 25 | 26 | 32 | 8 | 6 | 13 | 16 | 18 | 28 | 32 | 14 | 13 | 18 | 15 | 20 | 13 | 11 | 16 | 19 | 16 | | |
| Humenné, Nám. slobody | 12 | 14 | 17 | 17 | 14 | 15 | 17 | 10 | 11 | 13 | 22 | 26 | 24 | 42 | 11 | 12 | 12 | 16 | 15 | 33 | 29 | 15 | 15 | 26 | 26 | 16 | 15 | 14 | 17 | | | | |
| Kolonické sedlo | 12 | 14 | 17 | 10 | 11 | 10 | 18 | 8 | 6 | 6 | 10 | 17 | 22 | 37 | 10 | 10 | 7 | 10 | 11 | 29 | 27 | 15 | 10 | 14 | 14 | 9 | 5 | 5 | 11 | 12 | 10 | | |
| Poprad, Železničná | 13 | 17 | 18 | 11 | 13 | 15 | 14 | 8 | 9 | 16 | 19 | 26 | 20 | 23 | 8 | 9 | 17 | 20 | 19 | 29 | 22 | 9 | 13 | 18 | 11 | 12 | 8 | 5 | 9 | 13 | 14 | | |
| Prešov, arm. gen. L. Svobodu | 13 | 21 | 23 | 17 | 17 | 19 | 17 | 7 | 12 | 20 | 29 | 32 | 35 | 40 | 11 | 13 | 19 | 22 | 26 | 37 | 30 | 15 | 22 | 23 | 24 | 18 | 17 | 11 | 18 | 21 | 20 | | |
| Stará Lesná, AÚ SAV, EMEP | 10 | 10 | 12 | 7 | 8 | 8 | 7 | 5 | 4 | 9 | 16 | 21 | 15 | 20 | 5 | 5 | 7 | 9 | 14 | 24 | 20 | 10 | 7 | 12 | 9 | 6 | 4 | 4 | 7 | 7 | 10 | | |
| Vranov nad Topľou, M.R.Štefánika | 11 | 15 | 21 | 13 | 12 | 15 | 17 | 7 | 9 | 10 | 17 | 22 | 27 | 35 | 7 | 7 | 10 | 16 | 20 | 26 | 26 | 16 | 17 | 18 | 21 | 14 | 10 | 10 | 16 | 17 | 18 | | |



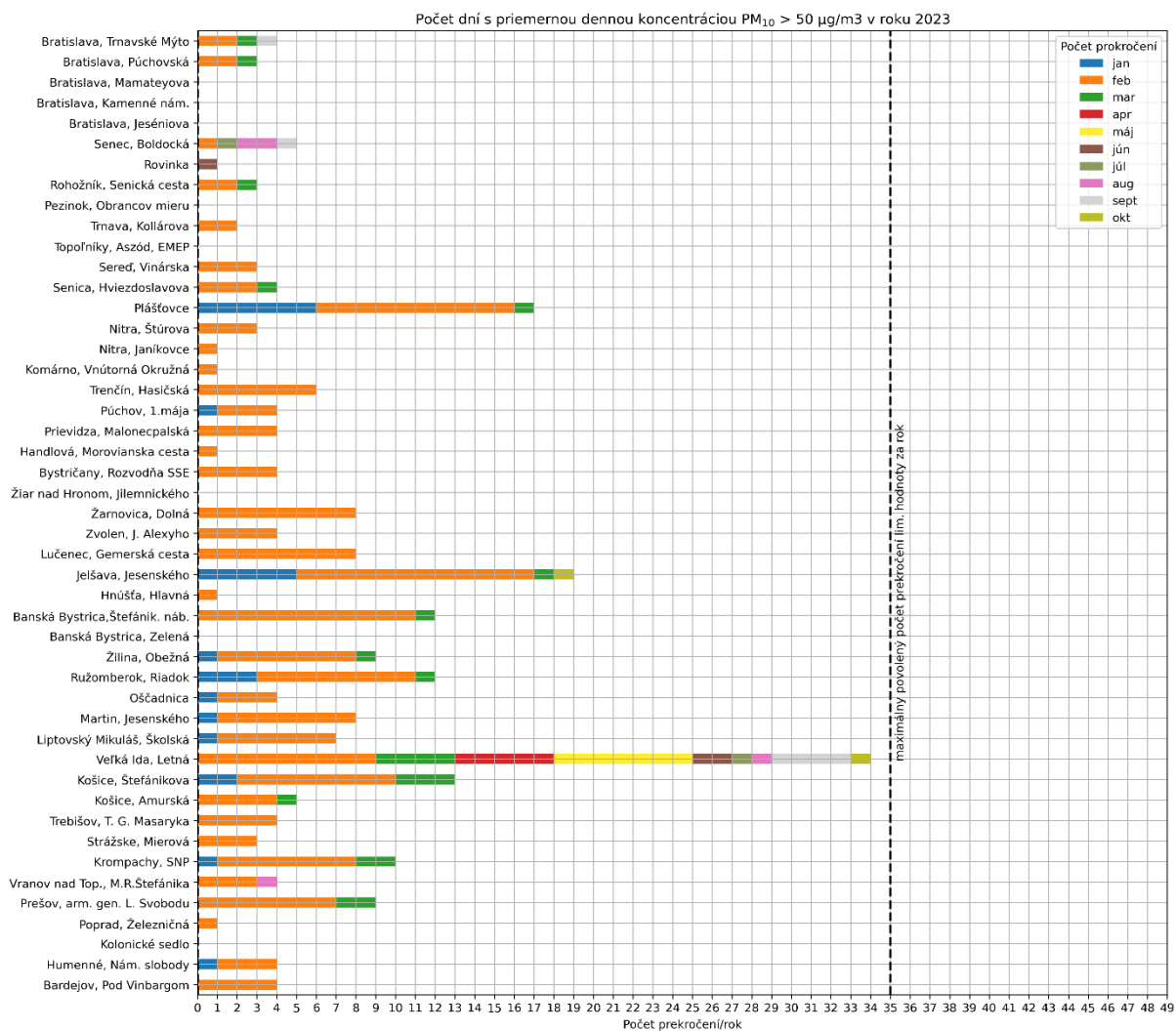
Hodnoty sú uvedené v µg/m³. Prázdny štvorec znamená menej ako 75 % platných meraní za daný deň.

Poznámka

Limitná hodnota pre priemernú ročnú koncentráciu PM₁₀ je 40 µg/m³.

Priemerná denná koncentrácia PM₁₀ nesmie prekročiť hodnotu 50 µg/m³ viac ako 35 krát za kalendárny rok.

Počet prekročení limitnej hodnoty pre priemernú dennú koncentráciu PM₁₀



Poznámka

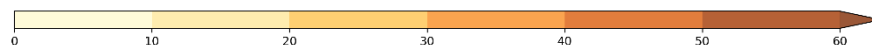
Limitná hodnota pre priemernú ročnú koncentráciu PM₁₀ je 40 µg/m³.

Priemerná denná koncentrácia PM₁₀ nesmie prekročiť hodnotu 50 µg/m³ viac ako 35 krát za kalendárny rok.

Priemerné denné koncentrácie PM_{2,5}

| | Deň v mesiaci | | | | | | | | | | | | | | | | | | | | | | | | | | | | | | | | |
|--|---------------|----|----|----|----|----|----|----|----|----|----|----|----|----|----|----|----|----|----|----|----|----|----|----|----|----|----|----|----|----|----|-----|----|
| | 1 | 2 | 3 | 4 | 5 | 6 | 7 | 8 | 9 | 10 | 11 | 12 | 13 | 14 | 15 | 16 | 17 | 18 | 19 | 20 | 21 | 22 | 23 | 24 | 25 | 26 | 27 | 28 | 29 | 30 | 31 | | |
| Bratislava, Jeséniova | 6 | 11 | 13 | 2 | 7 | 4 | 10 | 5 | 5 | 11 | 12 | 17 | 14 | 16 | 2 | 2 | 7 | 14 | 23 | 15 | 7 | 3 | 8 | 9 | 7 | 7 | 5 | 3 | 8 | 6 | 5 | BA | |
| Bratislava, Kamenné nám. | 8 | 13 | 15 | 3 | 6 | 6 | 7 | 4 | 3 | 11 | 17 | 18 | 14 | 12 | 3 | 3 | 7 | 11 | 20 | 12 | 7 | 4 | 6 | 5 | 4 | 7 | 4 | 3 | 7 | 7 | 3 | | |
| Bratislava, Mamateyova | 2 | 6 | 7 | 2 | 4 | 3 | 3 | 2 | 1 | 3 | 6 | 9 | 8 | 6 | 1 | 2 | 4 | 7 | 16 | 5 | 3 | 1 | 5 | 3 | 1 | 2 | 1 | 1 | 2 | 2 | 1 | | |
| Bratislava, Púchovská | 5 | 11 | 14 | 4 | 5 | 6 | 10 | 3 | 3 | 9 | 14 | 16 | 15 | 13 | 2 | 1 | 5 | 10 | 18 | 13 | 7 | 2 | 6 | 5 | 4 | 5 | 3 | 2 | 5 | 4 | 2 | | |
| Bratislava, Trnavské Mýto | 4 | 10 | 15 | 6 | 12 | 11 | 11 | 7 | 6 | 15 | 22 | 24 | 22 | 18 | 2 | 4 | 10 | 13 | 23 | 19 | 12 | 4 | 11 | 9 | 6 | 8 | 5 | 5 | 7 | 7 | 4 | | |
| Pezinok, Obrancov mieru | 3 | 6 | 8 | 2 | 4 | 4 | 6 | 3 | 3 | 7 | 8 | 10 | 9 | 9 | 1 | 1 | 5 | 8 | 13 | 9 | 5 | 3 | 5 | 8 | 7 | 7 | 7 | 7 | 10 | 8 | 6 | | |
| Rohožník, Senická cesta | 3 | 8 | 12 | 3 | 4 | 4 | 8 | 4 | 4 | 7 | 13 | 15 | 14 | 13 | 2 | 6 | 7 | 10 | 21 | 12 | 7 | 3 | 7 | 7 | 4 | 4 | 3 | 4 | 7 | 6 | 4 | | |
| Senec, Boldocká | 8 | 12 | 17 | 5 | 8 | 8 | 10 | 6 | 6 | 14 | 13 | 20 | 20 | 18 | 3 | 3 | 8 | 11 | 20 | 17 | 9 | 7 | 10 | 7 | 10 | 9 | 4 | 6 | 6 | 7 | 6 | BSK | |
| Senica, Hviezdoslavova | 7 | 11 | 13 | 3 | 7 | 8 | 9 | 4 | 5 | 13 | 15 | 20 | 17 | 17 | 2 | 4 | 6 | 11 | 19 | 17 | 10 | 7 | 7 | 7 | 8 | 6 | 4 | 4 | 5 | 5 | 5 | | |
| Sereď, Vinárska | 4 | 9 | 10 | 4 | 8 | 7 | 9 | 4 | 4 | 12 | 13 | 19 | 19 | 15 | 1 | 5 | 8 | 10 | 17 | 12 | 4 | 3 | 6 | 4 | 5 | 6 | 2 | 2 | 3 | 3 | 5 | | |
| Topoľníky, Aszód, EMEP | 9 | 12 | 14 | 8 | 11 | 10 | 12 | 8 | 8 | 15 | 15 | 22 | 19 | 19 | 6 | 5 | 8 | 15 | 23 | 14 | 9 | 6 | 8 | 6 | 6 | 5 | 3 | 4 | 5 | 6 | 6 | TT | |
| Trnava, Kollárova | 9 | 13 | 15 | 8 | 11 | 13 | 13 | 6 | 6 | 18 | 19 | 25 | 26 | 20 | 3 | 4 | 10 | 14 | 21 | 19 | 12 | 7 | 10 | 9 | 8 | 10 | 4 | 6 | 6 | 8 | 7 | | |
| Komárno, Vnútrná Okružná | 4 | 9 | 9 | 4 | 5 | 6 | 7 | 4 | 5 | 10 | 11 | 20 | 16 | 16 | 1 | 2 | 5 | 11 | 17 | 12 | 6 | 2 | 3 | 4 | 3 | 5 | 1 | 3 | 3 | 3 | 4 | | |
| Nitra, Janíkovce | 5 | 10 | 10 | 5 | 9 | 8 | 10 | 5 | 6 | 14 | 16 | 21 | 21 | 19 | 5 | 6 | 10 | 12 | 21 | 15 | 9 | 5 | 7 | 7 | 7 | 6 | 3 | 5 | 6 | 5 | 7 | | |
| Nitra, Štúrova | 7 | 10 | 11 | 5 | 10 | 7 | 8 | 5 | 4 | 11 | 14 | 20 | 19 | 18 | 3 | 4 | 7 | 9 | 15 | 14 | 7 | 5 | 6 | 6 | 7 | 7 | 3 | 4 | 4 | 6 | 7 | NR | |
| Plášťovce | 6 | 8 | 12 | 8 | 8 | 9 | 12 | 8 | 7 | 18 | 21 | 26 | 19 | 21 | 11 | 12 | 18 | 23 | 22 | 24 | 11 | 14 | 21 | 16 | 13 | 15 | 7 | 21 | 15 | 16 | 11 | | |
| Bystričany, Rozvodňa SSE | 5 | 8 | 9 | 3 | 7 | 7 | 9 | 3 | 6 | 11 | 14 | 15 | 14 | 14 | 3 | 5 | 8 | 9 | 12 | 13 | 6 | 3 | 4 | 6 | 6 | 4 | 3 | 4 | 5 | 4 | 5 | | |
| Handlová, Morovianska cesta | 3 | 5 | 5 | 3 | 5 | 4 | 5 | 3 | 3 | 11 | 9 | 14 | 8 | 11 | 4 | 7 | 8 | 7 | 8 | 12 | 5 | 5 | 4 | 3 | 2 | 2 | 1 | 6 | 3 | 2 | 4 | | |
| Prievidza, Malonecpalská | 7 | 9 | 9 | 5 | 9 | 8 | 10 | 6 | 6 | 13 | 16 | 19 | 15 | 16 | 6 | 8 | 7 | 9 | 11 | 15 | 7 | 5 | 5 | 6 | 7 | 9 | 5 | 8 | 7 | 7 | 12 | | |
| Púchov, 1.mája | 6 | 7 | 8 | 3 | 4 | 9 | 5 | 4 | 4 | 8 | 8 | 13 | 17 | 19 | 6 | 10 | 12 | 17 | 19 | 18 | 14 | 7 | 7 | 10 | 9 | 8 | 7 | 8 | 12 | | | TN | |
| Trenčín, Hasičská | 7 | 9 | 9 | 3 | 7 | 9 | 9 | 3 | 6 | 12 | 15 | 20 | 21 | 20 | 4 | 7 | 13 | 14 | 17 | 17 | 12 | 7 | 9 | 10 | 9 | 11 | 6 | 7 | 6 | 8 | 9 | | |
| Banská Bystrica, Zelená | 7 | 8 | 8 | 5 | 7 | 7 | 10 | | 9 | 12 | 14 | 16 | 13 | 14 | 5 | 5 | 7 | 10 | 13 | 14 | 9 | 4 | 5 | 9 | 7 | 8 | 4 | 4 | 8 | 8 | 6 | | |
| Banská Bystrica, Štefánik. nám. | 2 | 5 | 6 | 2 | 6 | 5 | 5 | 2 | 5 | 6 | 9 | 12 | 10 | 7 | 2 | 4 | 7 | 9 | 9 | 14 | 5 | 2 | 3 | 6 | 4 | 3 | 2 | 3 | 5 | 9 | 5 | | |
| Hnúšťa, Hlavná | 5 | 6 | 8 | 3 | 5 | 5 | 7 | 4 | 5 | 7 | 12 | 15 | 10 | 13 | 4 | 5 | 6 | 8 | 12 | 13 | 7 | 5 | 4 | 10 | 6 | 9 | 5 | 7 | 7 | 8 | 10 | | |
| Jelšava, Jesenského | 9 | 9 | 11 | 8 | 9 | 11 | 10 | | | | 22 | 23 | 18 | 19 | 9 | 12 | 14 | 20 | 26 | 27 | 18 | 9 | 12 | 17 | 14 | 13 | 14 | 11 | 23 | 23 | 21 | | |
| Lučenec, Gemerská cesta | 7 | 10 | 13 | 9 | 11 | 13 | 12 | 7 | 10 | 15 | 23 | 21 | 24 | 21 | 8 | 8 | 14 | 19 | 14 | 20 | 13 | 5 | 11 | 14 | 9 | 10 | 4 | 7 | 12 | 18 | 12 | | |
| Zvolen, J. Alexyho | 5 | 8 | 11 | 3 | 7 | 7 | 10 | 5 | 9 | 15 | 16 | 17 | 14 | 14 | 5 | 4 | 12 | | | | 17 | 8 | 3 | 8 | 9 | 7 | 9 | 4 | 6 | 12 | 10 | 8 | |
| Žarnovica, Dolná | 9 | 12 | 12 | 7 | 13 | 12 | 13 | 10 | 7 | 15 | | | | | | | | | | | | | | | | | | | | | | | BB |
| Žiar nad Hronom, Jilemnického | 5 | 7 | 10 | 4 | 5 | 7 | 7 | 5 | 4 | 11 | 12 | 14 | 13 | 13 | 3 | 4 | 7 | | | | 15 | 8 | 3 | 5 | 7 | 6 | 8 | 3 | 4 | 6 | 6 | 8 | |
| Liptovský Mikuláš, Školská | 8 | 9 | 9 | 5 | 8 | 8 | 9 | 4 | 7 | 6 | 13 | 16 | 10 | 11 | 4 | 5 | 10 | 13 | 13 | 11 | 7 | 5 | 7 | 10 | 7 | 8 | 4 | 7 | 5 | 6 | 8 | | |
| Martin, Jesenského | 8 | 10 | 11 | 9 | 12 | 12 | 12 | 6 | 8 | 16 | 17 | 19 | 16 | 13 | 5 | 11 | 19 | 18 | 17 | 9 | 8 | 13 | | | 10 | 7 | 5 | 9 | 8 | 8 | | | |
| Oščadnica | 6 | 6 | 8 | 4 | 10 | 13 | 12 | 7 | 10 | 11 | 15 | 17 | 12 | 8 | 16 | 12 | 13 | 18 | 15 | 10 | 7 | 6 | 7 | 12 | 11 | 7 | 10 | 5 | 7 | 7 | | | |
| Ružomberok, Riadok | 6 | 7 | 9 | | | 11 | 11 | 5 | 8 | 9 | | | 13 | 13 | 5 | 9 | 15 | 15 | 15 | 14 | | | 11 | 13 | 10 | 10 | 8 | 6 | 9 | 8 | 8 | | |
| Žilina, Obežná | 7 | 10 | 12 | 6 | 9 | 12 | 9 | 5 | 9 | 15 | 17 | 17 | 16 | 13 | 4 | 8 | 13 | 18 | 18 | 15 | 8 | 6 | 10 | 12 | 8 | 8 | 6 | 6 | 9 | 8 | 6 | ZA | |
| Košice, Amurská | 7 | 14 | 15 | 7 | 10 | 12 | 11 | 5 | 7 | 11 | 16 | 19 | 22 | 29 | 5 | 6 | 7 | 15 | 17 | 19 | 17 | 8 | 11 | 14 | 12 | 9 | 6 | 5 | 18 | 15 | 14 | | |
| Košice, Štefánikova | 6 | 12 | 15 | 8 | 8 | 10 | 10 | 4 | 6 | 12 | 17 | 20 | 22 | 28 | 4 | 7 | 7 | 13 | 15 | 26 | 19 | 9 | 12 | 15 | 14 | 10 | 8 | 5 | 15 | 16 | 15 | KE | |
| Veľká Ida, Letná | 10 | 11 | 13 | 12 | 11 | 16 | 8 | 14 | 8 | 16 | 16 | 21 | 27 | 29 | 11 | 8 | 17 | 31 | 19 | 23 | 19 | 7 | 19 | 19 | 13 | 8 | 6 | 6 | 13 | 16 | 13 | | |
| Krompachy, SNP | 6 | 10 | 12 | 6 | 10 | 9 | 13 | 4 | 9 | 11 | 18 | 22 | 18 | 15 | 5 | 9 | 11 | 15 | 18 | 18 | 13 | 9 | 8 | 13 | 10 | 8 | 6 | 7 | 10 | 9 | | | |
| Strážske, Mierová | 7 | 9 | 14 | 9 | 9 | 9 | 11 | 5 | 5 | 7 | 12 | 16 | 19 | 30 | 4 | 5 | 9 | 12 | 16 | 15 | 15 | 9 | 10 | 15 | 12 | 10 | 6 | 4 | 13 | 10 | 10 | | |
| Trebišov, T. G. Masaryka | 5 | 10 | 12 | 8 | 6 | 10 | 9 | 3 | 4 | 7 | 13 | 16 | 20 | 25 | 4 | 4 | 7 | 14 | 18 | 20 | 14 | 7 | 12 | 14 | 16 | 10 | 8 | 4 | 10 | 12 | 14 | KSK | |
| Bardejov, Pod Vinbargom | 5 | 8 | 11 | 6 | 6 | 7 | 9 | 3 | 4 | 5 | 12 | 19 | 18 | 23 | 4 | 4 | 8 | 12 | 15 | 20 | 18 | 7 | 8 | 13 | 10 | 11 | 7 | 7 | 12 | 11 | 12 | | |
| Humenné, Nám. slobody | 7 | 9 | 12 | 11 | 14 | 14 | 18 | 15 | 18 | 11 | 11 | 16 | 17 | 29 | 11 | 17 | 20 | 26 | 22 | 19 | 14 | 8 | 9 | 14 | 13 | 7 | 5 | 5 | 10 | 8 | 10 | | |
| Kolonické sedlo | 5 | 7 | 11 | 6 | 7 | 6 | 12 | 4 | 4 | 5 | 7 | 12 | 14 | 25 | 5 | 7 | 4 | 8 | 8 | 18 | 14 | 8 | 6 | 10 | 8 | 7 | 4 | 4 | 8 | 9 | 8 | | |
| Poprad, Železničná | 6 | 8 | 11 | 6 | 8 | 9 | 8 | 5 | 6 | 10 | 13 | 15 | 11 | 13 | 4 | 5 | 11 | 12 | 13 | 14 | 11 | 6 | 7 | 9 | 7 | 6 | 4 | 3 | 5 | 6 | 7 | | |
| Prešov, arm. gen. L. Svobodu | 5 | 10 | 12 | 8 | 9 | 9 | 9 | 4 | 5 | 12 | 17 | 18 | 22 | 25 | 6 | 6 | 11 | 13 | 17 | 21 | 13 | 8 | 13 | 14 | 15 | 10 | 10 | 6 | 12 | 12 | 13 | PO | |
| Stará Lesná, AÚ SAV, EMEP | 6 | 6 | 7 | 3 | 5 | 5 | 5 | 3 | 4 | 7 | 10 | 12 | 7 | 11 | 2 | 2 | 4 | 6 | 10 | 12 | 9 | 4 | 2 | 6 | 4 | 2 | 2 | 1 | 2 | 3 | 6 | | |
| Vranov nad Top., M.R.Štefánika | 5 | 8 | 14 | 7 | 7 | 9 | 11 | 4 | 5 | 7 | 12 | 15 | 19 | 24 | 3 | 4 | 6 | 12 | 16 | 15 | 12 | 9 | 10 | 13 | 11 | 8 | 7 | 6 | 11 | 9 | 12 | | |

Rozdelenie na aglomerácie a zóny



Hodnoty sú uvedené v $\mu\text{g}/\text{m}^3$. Prázdny štvorec znamená menej ako 75 % platných meraní za daný deň.

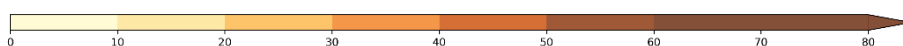
Poznámka

Limitná hodnota pre priemernú ročnú koncentráciu PM_{2,5} je 20 $\mu\text{g}/\text{m}^3$.

Pre PM_{2,5} nie je stanovená denná limitná hodnota.

Priemerné denné koncentrácie NO₂

| | Deň v mesiaci | | | | | | | | | | | | | | | | | | | | | | | | | | | | | | | | |
|---------------------------------|---------------|----|----|----|----|----|----|----|----|----|----|----|----|----|----|----|----|----|----|----|----|----|----|----|----|----|----|----|----|----|----|--|--|
| | 1 | 2 | 3 | 4 | 5 | 6 | 7 | 8 | 9 | 10 | 11 | 12 | 13 | 14 | 15 | 16 | 17 | 18 | 19 | 20 | 21 | 22 | 23 | 24 | 25 | 26 | 27 | 28 | 29 | 30 | 31 | | |
| Bratislava, Jeséniova | 3 | 11 | 9 | 2 | 10 | 7 | 8 | 3 | 8 | 11 | 10 | 11 | 12 | 6 | 3 | 6 | 12 | 15 | 11 | 7 | 5 | 6 | 10 | 11 | 8 | 12 | 10 | 9 | 6 | 7 | 7 | | |
| Bratislava, Mamateyova | 23 | 27 | 21 | 21 | 28 | 23 | 15 | 9 | 14 | 18 | 25 | 28 | 30 | 13 | 6 | 20 | 19 | 14 | 23 | 15 | 7 | 19 | 26 | 17 | 12 | 25 | 15 | 24 | 14 | 19 | 15 | | |
| Bratislava, Púchovská | 7 | 20 | 16 | 7 | 17 | 14 | 11 | 5 | 10 | 12 | 18 | 18 | 22 | 8 | 4 | 9 | 22 | 18 | 15 | 16 | 11 | 8 | 18 | 16 | 12 | 15 | 12 | 15 | 12 | 19 | 9 | | |
| Bratislava, Trnavské Mýto | 32 | 44 | 36 | 37 | 42 | 44 | 25 | 14 | 24 | 32 | 38 | 50 | 51 | 21 | 11 | 36 | 41 | 31 | 28 | 24 | 19 | 30 | 39 | 36 | 26 | 36 | 25 | 32 | 21 | 27 | 24 | | |
| Pezinok, Obrancov mieru | 4 | 8 | 10 | 2 | 9 | 6 | 8 | 3 | 10 | 12 | 9 | 11 | 15 | 6 | 2 | 6 | 12 | 13 | 11 | 10 | 7 | 7 | 14 | 12 | 7 | 16 | 9 | 13 | 7 | 11 | 7 | | |
| Rohožník, Senická cesta | | 2 | | 0 | | 0 | | | | | 2 | 2 | 0 | | | 1 | 2 | | | | | | 2 | | 0 | | 1 | | | 1 | | | |
| Rovinka | 13 | 14 | 9 | 11 | 16 | 17 | 8 | 7 | 11 | 12 | 11 | 17 | 14 | 8 | 6 | 16 | 14 | 13 | 10 | 7 | 2 | 8 | 16 | 11 | 11 | 16 | 11 | 8 | 4 | 8 | 15 | | |
| Senec, Boldocká | 22 | 24 | 18 | 22 | | 33 | 18 | 13 | 17 | 16 | 18 | 33 | 31 | 15 | 9 | 23 | 19 | 14 | 13 | 11 | 6 | 24 | 24 | 13 | 17 | 26 | 18 | 24 | 10 | 15 | 24 | | |
| Sereď, Vinárska | 13 | 14 | 9 | 16 | 21 | 15 | 8 | 8 | 12 | 11 | 11 | 19 | 18 | 7 | 6 | 21 | 14 | 8 | 7 | 8 | 5 | 13 | 12 | 8 | 10 | 17 | 10 | 15 | 4 | 7 | 13 | | |
| Topoľníky, Aszód, EMEP | 2 | 4 | 3 | 3 | 6 | 4 | 4 | 3 | 4 | 5 | 5 | 5 | 5 | 3 | 3 | 4 | 5 | 6 | 8 | 3 | 2 | 5 | 4 | 6 | 5 | 4 | 4 | 4 | 2 | 3 | 6 | | |
| Trnava, Kollárova | 27 | 35 | 31 | 35 | 36 | 40 | 17 | 20 | 25 | 25 | 25 | 37 | 37 | 20 | 18 | 34 | 33 | 31 | 24 | 15 | 14 | 26 | 31 | 25 | 20 | 29 | 27 | 26 | 22 | 33 | 27 | | |
| Komárno, Vnútorňa Okružná | 14 | 19 | 13 | 13 | 18 | 21 | 14 | 7 | 13 | 14 | 15 | 24 | 22 | 17 | 7 | 18 | 13 | 14 | 14 | 8 | 6 | 13 | 15 | 16 | 13 | 15 | 11 | 18 | 6 | 12 | 12 | | |
| Nitra, Janíkovce | 10 | 10 | 6 | 8 | 15 | 11 | 10 | 5 | 8 | 9 | 9 | 9 | 12 | 6 | 8 | 13 | 12 | 9 | 7 | 4 | 3 | 6 | 10 | 7 | 7 | 10 | 7 | 10 | 3 | 4 | 9 | | |
| Nitra, Štúrova | 18 | 33 | 34 | 23 | 33 | 32 | 22 | 16 | 33 | 24 | 26 | 34 | 28 | 24 | 15 | 28 | 35 | 41 | 32 | 25 | 18 | 21 | 26 | 33 | 20 | 29 | 27 | 32 | 24 | 36 | 29 | | |
| Plášťovce | 4 | 6 | 8 | 6 | 6 | 7 | 6 | 4 | 8 | 8 | 10 | 9 | 8 | 8 | 6 | 8 | 10 | 10 | 8 | 10 | 6 | 6 | 9 | 10 | 8 | 9 | 7 | 8 | 6 | 11 | 7 | | |
| Prievidza, Malonecpalská | 22 | 26 | 22 | 23 | 36 | 31 | 21 | 17 | 27 | 26 | 27 | 38 | 32 | 24 | 22 | 35 | 27 | 23 | 12 | 23 | 12 | 18 | 17 | 13 | 31 | 32 | 26 | 30 | 13 | 24 | 28 | | |
| Púchov, 1.mája | 5 | 8 | 10 | 6 | 10 | 11 | 5 | 6 | 13 | 13 | 10 | 9 | 10 | 6 | 4 | 11 | 10 | 13 | 19 | 6 | 6 | 5 | 7 | 10 | 9 | 9 | 11 | 10 | 9 | 12 | 7 | | |
| Trenčín, Hasičská | 20 | 27 | 19 | 12 | 28 | 26 | 19 | 8 | 28 | 22 | 23 | 34 | 31 | 22 | 10 | 23 | 25 | 32 | 24 | 15 | 15 | 18 | 26 | 22 | 24 | 30 | 23 | 28 | 14 | 22 | 25 | | |
| Banská Bystrica, Zelená | 5 | 8 | 6 | 3 | 9 | 9 | 7 | | 15 | 11 | 9 | 9 | 7 | 4 | 2 | 5 | 8 | 8 | 14 | 12 | 7 | 4 | 7 | 8 | 6 | 10 | 6 | 5 | 5 | 8 | 7 | | |
| Banská Bystrica, Štefánik, náb. | 15 | 21 | 22 | 16 | 27 | 25 | 19 | 10 | 29 | 18 | 21 | 24 | 23 | 17 | 10 | 20 | 27 | 31 | 37 | 21 | 19 | 17 | 18 | 24 | 23 | 20 | 23 | 21 | 18 | 29 | 28 | | |
| Jelšava, Jesenského | 3 | 3 | 4 | 4 | 5 | 4 | 5 | 3 | 8 | 5 | 6 | 6 | 6 | 5 | 4 | 5 | 5 | 6 | 14 | 7 | 5 | 4 | 6 | 6 | 6 | 5 | 9 | 4 | 7 | 7 | 10 | | |
| Lučenec, Gemerská cesta | 8 | 13 | 16 | 12 | 14 | 17 | 8 | 3 | 17 | 12 | 17 | 17 | 19 | 13 | 6 | 14 | 21 | 22 | 18 | 14 | 13 | 7 | 16 | 14 | 11 | 13 | 12 | 12 | 8 | 18 | 19 | | |
| Žarnovica, Dolná | 6 | 9 | 10 | 8 | 11 | 11 | 9 | 7 | 12 | 9 | | | | | | | | | | | | | | | | | | | | | | | |
| Chopok, EMEP | 1 | 1 | 1 | 1 | 1 | 1 | 0 | 1 | 1 | 1 | 1 | 1 | 1 | 2 | 1 | 1 | 1 | 1 | 3 | 2 | 1 | 1 | 0 | 1 | 1 | 1 | 2 | 0 | 1 | 1 | 3 | | |
| Liptovský Mikuláš, Školská | 5 | 13 | 8 | 6 | 11 | 13 | 8 | 2 | 19 | 13 | 12 | 17 | 16 | 8 | 4 | 10 | 16 | 18 | 17 | 9 | 3 | 7 | 14 | 14 | 14 | 12 | 15 | 8 | 8 | 14 | 11 | | |
| Martin, Jesenského | 13 | 18 | 15 | 17 | 16 | 20 | 12 | 8 | 18 | 18 | 16 | 16 | 24 | 11 | 10 | 23 | 22 | 22 | 31 | 21 | 16 | 13 | 16 | 17 | 20 | 14 | 23 | 10 | 14 | 19 | 16 | | |
| Ošádnicia | 2 | 3 | 2 | 2 | 3 | 5 | 4 | 2 | 7 | 8 | 6 | 5 | 5 | 4 | 2 | 6 | 4 | 5 | 9 | 3 | 2 | 3 | 3 | 3 | 4 | 5 | 9 | 5 | 2 | 4 | 3 | | |
| Ružomberok, Riadok | 11 | 17 | 11 | 11 | 17 | 21 | 13 | 5 | 20 | 13 | 14 | 20 | 24 | 14 | 9 | 16 | 21 | 22 | 22 | 12 | | | 18 | 16 | 21 | 19 | 21 | 16 | 13 | 20 | 15 | | |
| Žilina, Obežná | 12 | 20 | 19 | 15 | 22 | 22 | 12 | 9 | 22 | 20 | 19 | 26 | 27 | 14 | 10 | 19 | 21 | 26 | 30 | 12 | 12 | 14 | 20 | 26 | 21 | 15 | 19 | 17 | 19 | 24 | 12 | | |
| Kojšovská hoľa | 1 | 2 | 4 | 2 | 2 | 2 | 1 | 1 | 2 | 3 | 3 | 4 | 4 | 4 | 1 | 1 | 4 | 5 | 5 | 3 | 3 | 2 | 3 | 3 | 2 | 4 | 1 | 2 | 4 | 4 | 4 | | |
| Košice, Štefánikova | 13 | 30 | 32 | 19 | 23 | 32 | 21 | 13 | 24 | 28 | 27 | 34 | 36 | 27 | 15 | 25 | 21 | 32 | 37 | 36 | 26 | 17 | 27 | 30 | 31 | 26 | 29 | 23 | 23 | 33 | 35 | | |
| Krompachy, SNP | 6 | 10 | 13 | 13 | 13 | 11 | 11 | 7 | 14 | 11 | 13 | 15 | 14 | 11 | 8 | 13 | 12 | 13 | 19 | 18 | 13 | 8 | 11 | 14 | 13 | 10 | 14 | 11 | 12 | 19 | | | |
| Trebišov, T. G. Masaryka | 6 | 13 | 9 | 11 | 12 | 18 | 7 | 5 | 12 | 12 | 12 | 17 | 17 | 12 | 7 | 14 | 14 | 19 | 19 | 17 | 9 | 8 | 13 | 16 | 13 | 8 | 9 | 6 | 7 | 13 | 16 | | |
| Bardejov, Pod Vinbargom | 7 | 10 | 6 | 9 | 11 | 9 | 8 | 5 | 9 | 9 | 7 | 11 | 11 | 9 | 6 | 11 | 11 | 12 | 9 | 10 | 11 | 8 | 8 | 8 | 10 | 10 | 12 | 10 | 6 | 15 | 9 | | |
| Gánovce, Meteo. st. | 5 | 8 | 5 | 3 | 6 | 7 | 2 | 3 | 6 | 4 | 3 | 2 | 4 | 2 | 3 | 5 | 14 | 10 | 4 | 3 | 2 | 2 | 10 | 3 | 4 | 6 | 7 | 2 | 2 | 2 | 4 | | |
| Humenné, Nám. slobody | 4 | 4 | 5 | 7 | 7 | 6 | 7 | 5 | 6 | 7 | 6 | 7 | 7 | 7 | 5 | 11 | 8 | 7 | 7 | 6 | 5 | 6 | 7 | 6 | 9 | 7 | 6 | 10 | 4 | 5 | 4 | | |
| Poprad, Železničná | 10 | 16 | 11 | 10 | 13 | 16 | 7 | 6 | 18 | 15 | 10 | 14 | 13 | 9 | 7 | 15 | 21 | 23 | 16 | 14 | 9 | 6 | 21 | 15 | 17 | 17 | 8 | 11 | 15 | 15 | | | |
| Prešov, arm. gen. L. Svobodu | 25 | 39 | 32 | 39 | 38 | 40 | 25 | 19 | 33 | 37 | 30 | 41 | 39 | 30 | 26 | 42 | 35 | 37 | 37 | 29 | 24 | 17 | 32 | 30 | 37 | 33 | 37 | 29 | 20 | 29 | 33 | | |
| Starina, Vodná nádrž, EMEP | 2 | 2 | 2 | 2 | 3 | 2 | 3 | 1 | 2 | 2 | 3 | 3 | 2 | 3 | 2 | 2 | 2 | 2 | 2 | 3 | 3 | 3 | 2 | 2 | 2 | 3 | 3 | 2 | 2 | 3 | 3 | | |
| Stará Lesná, AÚ SAV, EMEP | 3 | 3 | 3 | 2 | 3 | 3 | 3 | 2 | 5 | 6 | 4 | 3 | 3 | 3 | 3 | 3 | 5 | 6 | 7 | 5 | 3 | 3 | 4 | 5 | 5 | 3 | 5 | 2 | 2 | 2 | 4 | | |



Hodnoty sú uvedené v µg/m³. Prázdny štvorec znamená menej ako 75 % platných meraní za daný deň.

Poznámka

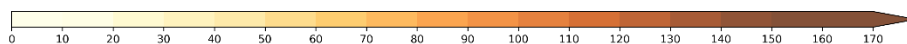
Limitná hodnota pre NO₂ :

Priemerná hodinová koncentrácia nesmie prekročiť hodnotu 200 µg/m³ viac ako 18 krát za kalendárny rok.

Limitná hodnota pre priemernú ročnú koncentráciu NO₂ je 40 µg/m³.

Maximálne denné 8-hodinové koncentrácie O₃

| | Deň v mesiaci | | | | | | | | | | | | | | | | | | | | | | | | | | | | | | | | |
|----------------------------|---------------|----|----|----|----|-----|-----|----|----|----|----|----|----|----|----|----|----|-----|----|----|----|----|----|----|----|----|----|----|----|----|----|-----|----|
| | 1 | 2 | 3 | 4 | 5 | 6 | 7 | 8 | 9 | 10 | 11 | 12 | 13 | 14 | 15 | 16 | 17 | 18 | 19 | 20 | 21 | 22 | 23 | 24 | 25 | 26 | 27 | 28 | 29 | 30 | 31 | | |
| Bratislava, Jeséniova | 81 | 92 | 88 | 84 | 82 | 86 | 93 | 76 | 60 | 48 | 55 | 77 | 80 | 77 | 66 | 68 | 62 | 70 | 53 | 73 | 73 | 70 | 66 | 45 | 54 | 41 | 55 | 69 | 58 | 63 | 61 | BA | |
| Bratislava, Mamateyova | 69 | 89 | 80 | 70 | 75 | 73 | 89 | 76 | 49 | 42 | 28 | 53 | 54 | 69 | 61 | 59 | 61 | 71 | 54 | 66 | 70 | 67 | 43 | 30 | 45 | 29 | 50 | 55 | 50 | 54 | 53 | BA | |
| Pezinok, Obrancov mieru | 73 | 90 | 83 | 78 | 80 | 77 | 90 | 76 | 48 | 46 | 47 | 62 | 72 | 73 | 64 | 65 | 60 | 71 | 57 | 66 | 73 | 65 | 48 | 41 | 51 | 39 | 54 | 67 | 50 | 52 | 61 | BSK | |
| Senec, Boldocká | 70 | 82 | 78 | 72 | | 70 | 81 | 72 | 42 | 26 | 50 | 56 | 72 | 72 | 63 | 56 | 61 | 73 | 55 | 68 | 72 | 59 | 40 | 42 | 45 | 37 | 48 | 60 | 58 | 58 | 53 | BSK | |
| Topoľníky, Aszód, EMEP | 71 | 77 | 75 | 70 | 66 | 71 | 82 | 71 | 52 | 27 | 68 | 74 | 65 | 76 | 55 | 64 | 60 | 73 | 55 | 69 | 72 | 61 | 58 | 41 | 52 | 48 | 44 | 55 | 68 | 69 | 58 | TT | |
| Komárno, Vnútoraná Okružná | 70 | 76 | 77 | 69 | 71 | 73 | 76 | 73 | 53 | 28 | 67 | 72 | 62 | 86 | 52 | 64 | 67 | 70 | 58 | 68 | 72 | 63 | 57 | 44 | 48 | 53 | 50 | 55 | 72 | 69 | 58 | NR | |
| Plášťovce | 69 | 74 | 91 | 73 | 86 | 75 | 87 | 74 | 46 | 29 | 58 | 74 | 75 | 81 | 66 | 65 | 63 | 73 | 60 | 52 | 70 | 53 | 53 | 51 | 46 | 50 | 46 | 57 | 56 | 58 | 53 | NR | |
| Banská Bystrica, Zelená | 65 | 58 | 76 | 79 | 75 | 76 | 76 | 73 | | 24 | 34 | 61 | 57 | 77 | 67 | 67 | 65 | 68 | 48 | 15 | 57 | 48 | 42 | 58 | 55 | 57 | 61 | 62 | 54 | 37 | 55 | BB | |
| Jeľšava, Jesenského | 53 | 63 | 73 | 76 | 69 | 66 | 67 | 73 | 37 | 42 | 25 | 63 | 69 | 76 | 53 | 44 | 62 | 62 | 22 | 18 | 36 | 35 | 39 | 44 | 34 | 45 | 32 | 57 | 44 | 48 | 20 | BB | |
| Lučenec, Gemerská cesta | 51 | 52 | 68 | 70 | 67 | 60 | 76 | 70 | 46 | 25 | 34 | 57 | 60 | 74 | 60 | 60 | 54 | 52 | 24 | 22 | 48 | 41 | 30 | 34 | 48 | 44 | 50 | 58 | 46 | 37 | 33 | BB | |
| Chopok, EMEP | 98 | 85 | 94 | 94 | 96 | 107 | 110 | 77 | 92 | 81 | 89 | 99 | 98 | 99 | 87 | 81 | 87 | 104 | 97 | 74 | 84 | 84 | 91 | 89 | 83 | 84 | 77 | 91 | 91 | 78 | 78 | ZA | |
| Ošadnica | 55 | 61 | 78 | 74 | 65 | 69 | 70 | 68 | 35 | 19 | 45 | 67 | 61 | 80 | 58 | 50 | 53 | 55 | 52 | 69 | 77 | 46 | 44 | 46 | 53 | 52 | 39 | 51 | 67 | 67 | 71 | ZA | |
| Ružomberok, Riadok | 46 | 32 | 66 | 67 | 66 | 62 | 66 | 65 | 37 | 22 | 48 | 60 | 35 | 70 | 50 | 51 | 29 | 30 | 51 | 52 | | | | 15 | 43 | 36 | 40 | 41 | 58 | 62 | 61 | 59 | ZA |
| Žilina, Obežná | 43 | 45 | 66 | 63 | 64 | 52 | 64 | 64 | 21 | 12 | 22 | 39 | 31 | 65 | 54 | 50 | 36 | 39 | 39 | 63 | 67 | 38 | 27 | 24 | 30 | 49 | 46 | 54 | 47 | 41 | 62 | ZA | |
| Kojšovská hoľa | 69 | 76 | 79 | 80 | 80 | 81 | 89 | 71 | 69 | 57 | 61 | 86 | 85 | 82 | 82 | 65 | 72 | 73 | 72 | 47 | 54 | 56 | 72 | 63 | 56 | 59 | 61 | 75 | 77 | 60 | 56 | KE | |
| Košice, Dumbierska | 60 | 57 | 82 | 75 | | 66 | 68 | 68 | 53 | 53 | 29 | 74 | 67 | 78 | 60 | 53 | 57 | 61 | 37 | 31 | 52 | 46 | 41 | 51 | 29 | 49 | 42 | 57 | 41 | 47 | 52 | KE | |
| Trebišov, T. G. Masaryka | 60 | 64 | 80 | 71 | 72 | 60 | 74 | 64 | 46 | 54 | 30 | 73 | 63 | 83 | 59 | 56 | 54 | 55 | 18 | 28 | 48 | 54 | 26 | 35 | 28 | 44 | 48 | 59 | 48 | 52 | 46 | KE | |
| Bardejov, Pod Vinbargom | 62 | 59 | 81 | 73 | 51 | 67 | 52 | 66 | 42 | 32 | 35 | 53 | 45 | 70 | 57 | 57 | 42 | 40 | 39 | 39 | 62 | 31 | 23 | 44 | 43 | 36 | 42 | 54 | 45 | 51 | 65 | PO | |
| Gánovce, Meteo. st. | 55 | 56 | 81 | 82 | 67 | 67 | 65 | 55 | 43 | 34 | 66 | 79 | 67 | 83 | 65 | 56 | 53 | 61 | 60 | 57 | 69 | 51 | 51 | 58 | 52 | 58 | 53 | 65 | 69 | 65 | 65 | PO | |
| Humenné, Nám. slobody | 62 | 60 | 85 | 81 | 68 | 69 | 82 | 66 | 46 | 45 | 55 | 79 | 71 | 94 | 55 | 53 | 46 | 56 | 63 | 60 | 58 | 55 | 44 | 59 | 57 | 51 | 52 | 60 | 67 | 68 | 74 | PO | |
| Starina, Vodná nádrž, EMEP | 66 | 58 | 78 | 78 | 63 | 70 | 71 | 46 | 46 | 46 | 75 | 58 | 85 | 55 | 54 | 54 | 57 | 60 | 57 | 55 | 55 | 42 | 59 | 48 | 39 | 50 | 55 | 66 | 69 | 75 | PO | | |
| Stará Lesná, AÚ SAV, EMEP | 52 | 58 | 72 | 64 | 66 | 68 | 63 | 62 | 37 | 33 | 48 | 82 | 57 | 84 | 49 | 58 | 56 | 56 | 65 | 76 | 51 | 49 | 55 | 46 | 65 | 40 | 65 | 74 | 70 | 69 | PO | | |



Hodnoty sú uvedené v µg/m³ Prázdny štvorec znamená menej ako 75 % platných meraní za daný deň

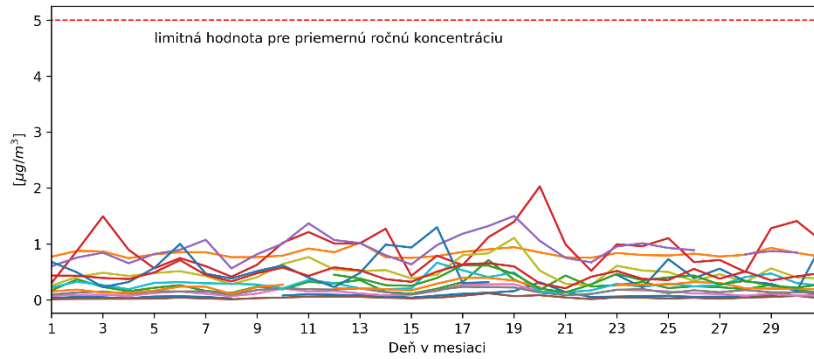
Poznámka

Cieľová hodnota pre O₃: Najväčšia denná 8-hodinová priemerná koncentrácia neprekročí 120 µg/m³ viac ako 25 dní za kalendárny rok v priemere troch rokov.

Vysvetlivky skratiek aglomerácií a zón

- BA aglomerácia Bratislava,
- KE aglomerácia Košice (územie mesta Košíc a obcí Bočiar, Haniska, Sokoľany a Veľká Ida),
- BSK zóna Bratislavský kraj (územie Bratislavského kraja okrem Bratislavy),
- TT zóna Trnavský kraj,
- BB zóna Banskobystrický kraj,
- NR zóna Nitriansky kraj,
- TN zóna Trenčiansky kraj,
- PO zóna Prešovský kraj,
- KSK zóna Košický kraj (územie Košického kraja okrem územia mesta Košíc a obcí Bočiar, Haniska, Sokoľany a Veľká Ida),
- ZA zóna Žilinský kraj.

**Priemerná denná koncentrácia benzénu
10/2023**



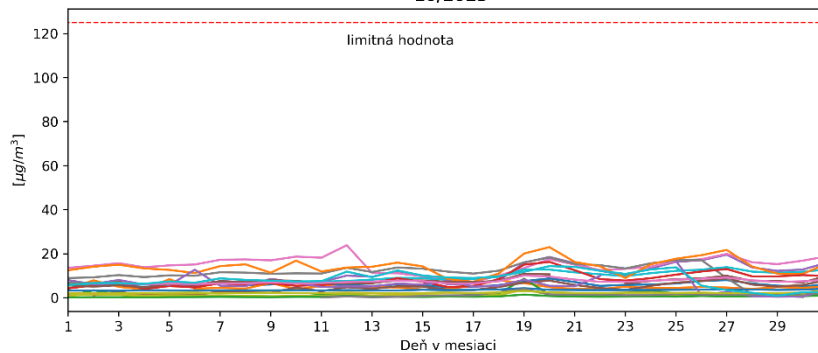
- Banská Bystrica, Štefánik. náb.
- Bratislava, Púchovská
- Bratislava, Trnavské Mýto
- Košice, Štefánikova
- Krompachy, SNP
- Lučenec, Gemerská cesta
- Martin, Jesenského
- Nitra, Štúrova
- Prešov, arm. gen. L. Svobodu
- Rohožník, Senická cesta
- Rovinka
- Ružomberok, Riadok
- Trenčín, Hasičská
- Trnava, Kollárova

Poznámka

Limitná hodnota pre priemernú ročnú koncentráciu benzénu je $5 \mu\text{g}/\text{m}^3$.

Benzén nemá stanovenú limitnú hodnotu pre priemernú dennú koncentráciu.

**Priemerná denná koncentrácia SO₂
10/2023**



- Banská Bystrica, Štefánik. náb.
- Bratislava, Jeseniouva
- Bratislava, Mamateyova
- Bratislava, Púchovská
- Bystričany, Rozvodňa SSE
- Handlová, Morovianska cesta
- Košice, Štefánikova
- Krompachy, SNP
- Liptovský Mikuláš, Školská
- Nitra, Štúrova
- Ošadnica
- Prievidza, Malonepcalská
- Púchov, 1.mája
- Rohožník, Senická cesta
- Rovinka
- Ružomberok, Riadok
- Senica, Hviezdoslavova
- Topoľníky, Aszód, EMEP
- Trenčín, Hasičská
- Vranov nad Top., M.R.Štefánika

Poznámka

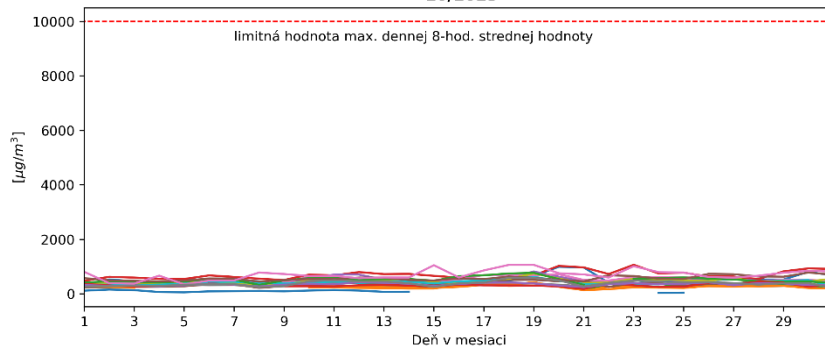
Limitná hodnota pre SO₂:

Priemerná hodinová koncentrácia nesmie prekročiť hodnotu $350 \mu\text{g}/\text{m}^3$ viac ako 24 krát za rok.

Priemerná 24-hodinová koncentrácie nesmie prekročiť hodnotu $125 \mu\text{g}/\text{m}^3$ viac ako 3 krát za rok.

SO₂ dlhodobo neprekračuje limitné hodnoty.

**Max.denná 8-hodinová stredná hodnota koncentrácie CO
10/2023**



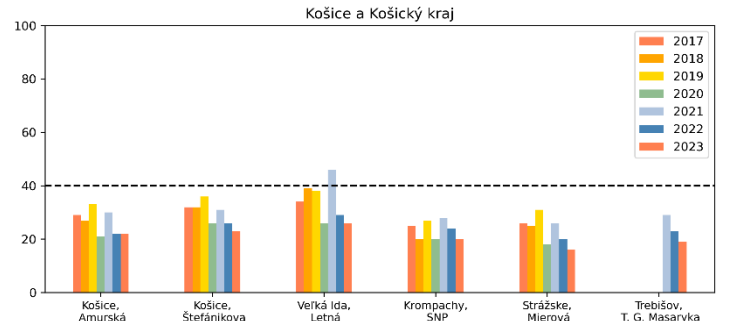
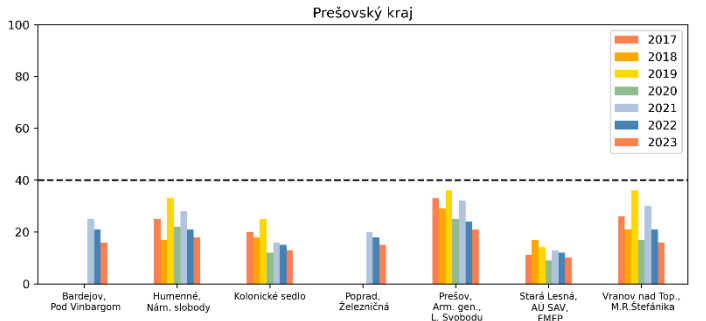
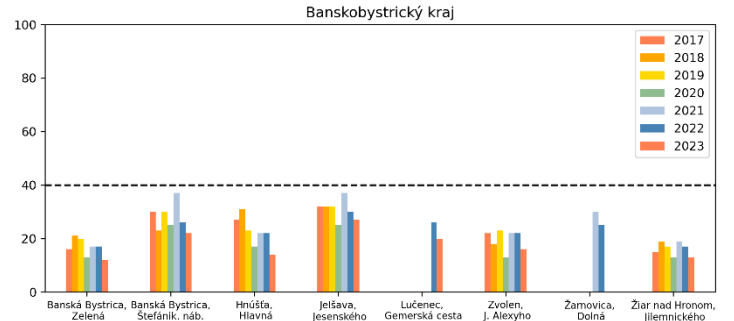
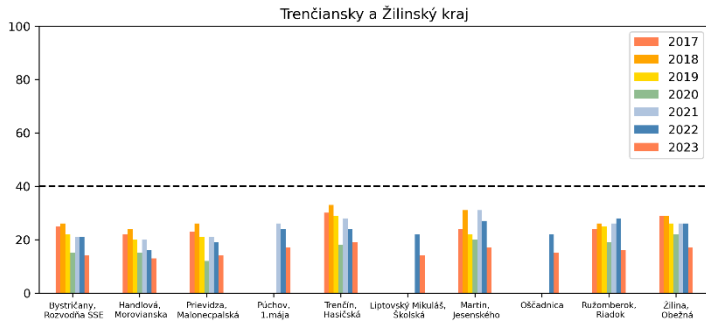
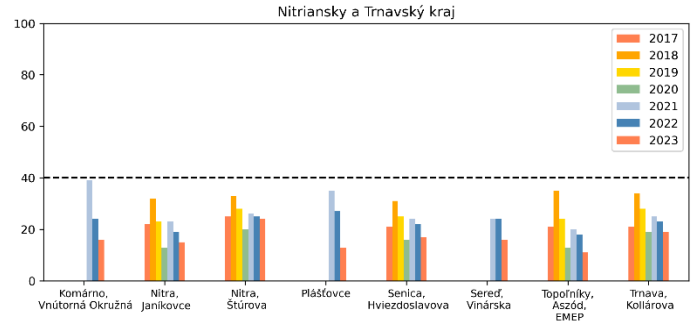
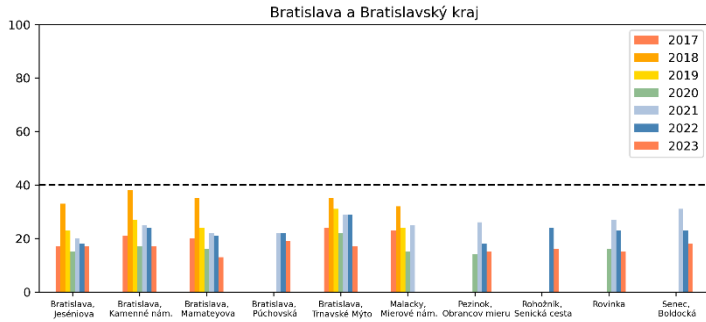
- Banská Bystrica, Štefánik. náb.
- Bratislava, Púchovská
- Bratislava, Trnavské Mýto
- Košice, Štefánikova
- Krompachy, SNP
- Lučenec, Gemerská cesta
- Martin, Jesenského
- Nitra, Štúrova
- Prešov, arm. gen. L. Svobodu
- Púchov, 1.mája
- Rohožník, Senická cesta
- Rovinka
- Ružomberok, Riadok
- Senec, Boldocká
- Trenčín, Hasičská
- Trnava, Kollárova
- Veľká Ida, Letná
- Žilina, Obežná

Poznámka

Limitná hodnota pre CO: Maximálna priemerná 8-hodinová koncentrácia je $10000 \mu\text{g}/\text{m}^3$.

CO dlhodobo neprekračuje limitné hodnoty.

Porovnanie priemerných mesačných koncentrácií PM₁₀ (µg/m³) v mesiaci október v rokoch 2017-2023



Smogový varovný systém

Smogový varovný systém v SR je nastavený pre tieto znečisťujúce látky: SO₂, NO₂, PM₁₀ a prízemný ozón (O₃)

Pravidlá na pre vydanie oznámenia o vzniku smogovej situácie a výstrahy pred závažnou smogovou situáciou sú dané legislatívou, ich zhrnutie a aktuálne hodnoty sú na [web stránke SHMU](#)

SO₂

Výstražný prah pre SO₂ nebol v priebehu mesiaca prekročený.

NO₂

Výstražný prah nebol v priebehu mesiaca prekročený.

PM₁₀

Informačný prah ani výstražný prah nebol v priebehu mesiaca prekročený.

O₃

Informačný prah ani výstražný prah nebol v priebehu mesiaca prekročený.

Poznámka

V tomto dokumente sú spracované údaje, ktoré prešli predbežnou validáciou.